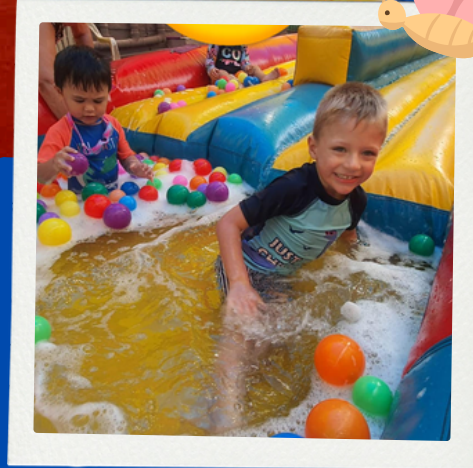
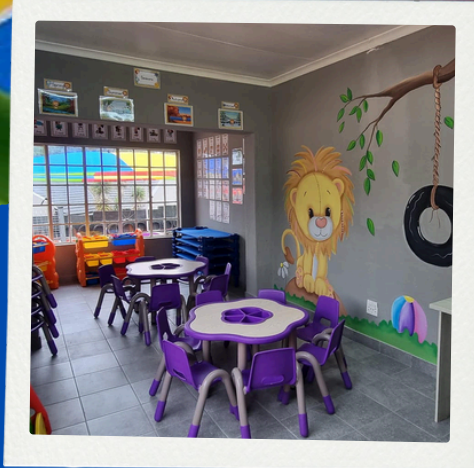


Little Leaders Exclusive RANDPARK RIDGE From Babies to Grade R



Address: 31 Rowland
Johnson Street, Malanshof,
Randburg
Catherine: 084 582 2582
Joelene: 0843602122
011 791 3146
www.littleleaders.co.za
Email: littleleadersmalanshof@gmail.com



Don't hesitate to contact us for any further information

We Focus on



Child Uniqueness: We understand the child is an individual, unique learner who is capable, confident and resilient.

Growing Positive Relations: Little Leaders children learn to grow an independent, positive relation from a loving base and secure relationship with parent and teacher.

Learning and Development: All individuals learn at different levels and at a different pace, all our developmental areas are equally important and are interconnected.

Environmental Factors: The playground is our learn through play development x-factor and stimulates the important senses.



Early Childhood Development Areas: Our preschool curriculum is designed with early learning and development areas (ELDA's) and we follow the national framework CAPS.

Physical Development:

Health and safety
Gross Motor development
Fine Motor development

Performing Arts:

Music and movement
Acro-Fusion
Gym

Communication:

Listen and understand
Speak and communication
Interactive Smart Learning

Outdoor Environment:

Trampoline Park
Modern outdoor play equipment
Shade netting covered play areas

Creativity:

Daily life and play
Art Classes
Little Chef creative cooking

The World is our oyster:

Exploring and gaining knowledge
Inquiry and understanding
Executive Functioning



Quick Facts:

Language Afrikaans and English
Ages: From 4 Months to Grade R
Class size: Controlled class size

School times from Monday - Friday
Full day: 7h30 - 17h30
Half day: 8h00 - 13h30
Early bird drop off 6h30.



The daily program:

- Morning Ring
- Theme Introduction
- Creativity Activity
- Performing Arts
- Free Play
- Movement development
- Story Time
- Nap Time
- Perceptual and sensory play





Extramural Activities

Offered by private tutors/teachers/coaches held on Little Leaders Exclusive premises include:



Acro Fusion



Dance & Movement



Gymbaroo



Little Chef



Sportnetics



Princess Curriculum



Mini Gym



Nutritious Daily Menu

MONDAY

Breakfast: Maizemeal Porridge

10:00: Yoghurt

11:45: Mince, Spaghetti and mixed vegetables

15:00: Picnic every day, with the kiddies snack boxes

TUESDAY

Breakfast: Jungle Oats

10:00: Yoghurt

11:45: Scramble Eggs & slice of bread

15:00: Picnic every day, with the kiddies snack boxes

WEDNESDAY

Breakfast: Cereal porridge

10:00: Yoghurt

11:45: Macaroni & Cheese

15:00: Picnic every day, with the kiddie snack boxes

THURSDAY

Breakfast : Maize Meal

10:00: Yoghurt

11:45: Wors, Mixed vegetables & rice

15:00: Picnic every day, with the kiddies snack boxes

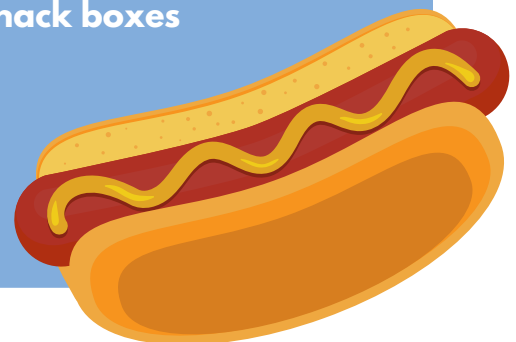
FRIDAY

Breakfast: Jungle Oats

10:00: Yoghurt

11:45: Hot Dogs with Chicken Vianas

15:00: Picnic every day, with the kiddie snack boxes



School fees

Please find below the information regarding your child's enrolment for Little Leaders 2025 and the associated fees. The fee structure for 2025 is as follows:

NON-REFUNDABLE ENROLMENT FEE PAYABLE ON REGISTRATION OF APPLICATION

Admin & Registration fee
R 1500.00
Due BEFORE 30 NOVEMBER

Administration fee
All activity registration for a year
Communication App
Book fee

Includes activities for entire year:
Acro Fusion, Chef classes, Gymbaroo, Sportnetics & Princess Classes (girls only)

HALF DAY SCHOOL FEES - PAYABLE OVER 12 Months

Grade/ Age	Monthly Fee January - December	Total for the year	Annual Payment Payable before 31 January 2025
Babies - Gr R	R4000.00	R48 000.00	R45 600.00

FULL DAY SCHOOL FEES - PAYABLE OVER 12 Months

Grade/ Age	Monthly Fee January - December	Total for the year	Annual Payment Payable before 31 January 2025
Babies - Gr R	R4500.00	R54 000.00	R51 300.00

OTHER FEES

Service	Fee	Optional/Compulsory
Branded T-Shirt	R180.00	Compulsory
School Dry-mac with fleece	R270.00	Optional
Summer Shorts	R150.00	Optional
Acro-Fusion Outfit	R220.00	Optional
Additional Fleece Blanket	R200.00	Optional

Stationery list to be provided

If you are new to Little Leaders a non-refundable registration fee is payable to secure your 2026 place.

Should you cancel after 30 November 2025, a full month's notice fee will be charged.



Monthly Necessities

**All Ages: 2 x Full Cream Long Life Milk, 2 x Boxes Tissues , 1 x Pack Wet Wipes
ONCE OFF PER YEAR: Dettol, Face Cloth, Sun Block**

Babies: Please supply own formula, nappies, bottles, disposable nappy bags etc.

Payment methods

Method 1	Annual payment in advance, due by 31 January 2026.
Method 2	Internet payments, due monthly in advance on or before the 7th day of each month x 12months.
We are a cash-less school only bank eft accepted	

Bank details

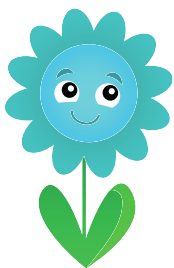
Name of account: Little Leaders Randpark
Bank: FNB / Cheque account
Account number: 63033430347
Branche code: 250655

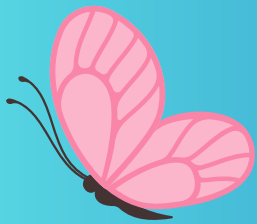
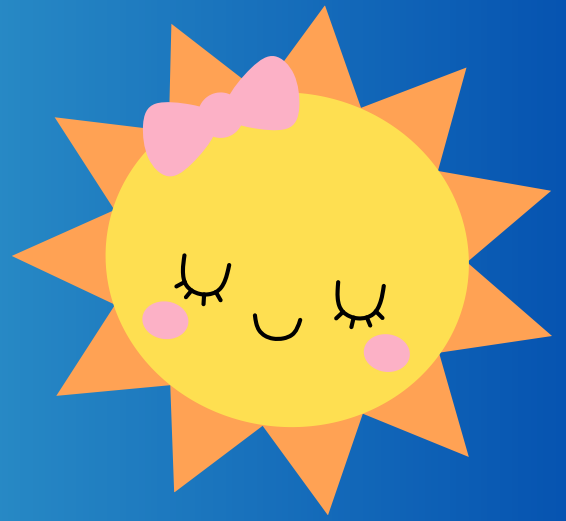
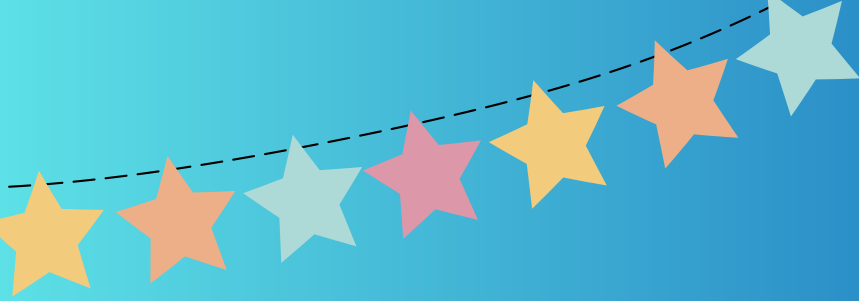
All payment references must be according to allocated reference code provided after enrolment

Should you be uncertain about anything in this letter, please contact Catherine: 084 582 2582 or 011 791 3146.

We thank you for your continued support and for selecting Little Leaders as your school of choice. We look forward to welcoming you and your child/children to the school. We believe 2026 will be a successful school year for us all.

**Kind regards
Catherine
Little Leaders Exclusive Randpark Ridge**





Private Pre-school

Nurturing our Future Leaders

